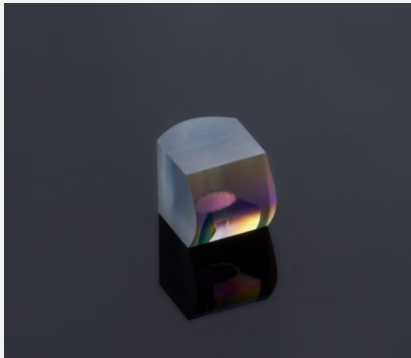


# Coupler for Pumping Application

## Monolithic solution for blue emitting TO-Cans



### Features and Advantages

Monolithic beam shaping and focusing optic for efficient light coupling of a single emitter (TO-can) for pumping applications.

The coupler is designed to be mounted in front of a single emitter, which is mounted in a TO-can housing.

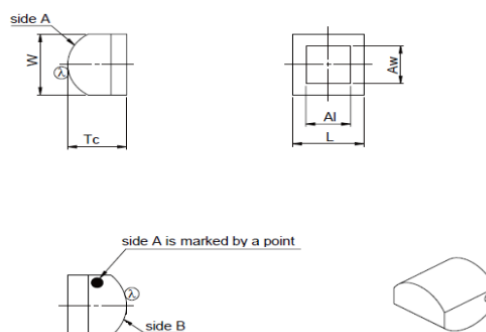
### Product Specifications

Product Code	ZLE000420	
Specification Data	Unit	Value
Material		S-LAM52 (Ohara)
Length (L)	mm	2.4 ± 0.1
Width (W)	mm	2.4 ± 0.1
Thickness (T)	mm	2.0 + 0 / - 0.1
Clear Aperture (A <sub>i</sub> x A <sub>w</sub> )	mm <sup>2</sup>	1.5 x 1.5
Refractive Index @ 445 nm		1.739
Effective Focal Length (EFL) @ 445 nm	mm	FA: 1.047; SA: 1.752
Back Focal Length (BFL) @ 445 nm <sup>(1)</sup>	mm	1.19
Distance Coupler to Crystal	mm	7.0
Numerical Aperture (NA)		FA:0.5; SA:0.12
AR Coating	nm	420 - 470
Transmission	%	> 99
Pump Spot Size (FW 1/e <sup>2</sup> ) <sup>(2)</sup>	µm	15 ± 5
Surface Imperfections (DIN ISO 10110-7)		5/ 10x0.01; C10x0.063; L4x0.016; E0.4

<sup>(1)</sup> Distance Emitter Facet to Coupler

<sup>(2)</sup> Valid for an emitter height of 2 µm (NA 0.33) and an emitter width of 14 µm (NA 0.12)

### Product Drawing



Rev 02 | Updated April 20, 2021 | RoHS compliant 2011/65/EU and 2015/863/EU

1

All rights reserved. Product specifications and descriptions are subject to change. All our products are patent pending. Please contact our sales representatives for complete details.

LIMO GmbH

Focuslight (Dongguan) Microoptics Co. Ltd.

Address: Bookenburgweg 4-8, 44319 Dortmund, Germany

Address: Room 301, Building 9, 38 Dongke Road, Dongcheng Street, Dongguan, Guangdong, P.R. China

Tel: +49 231 22 24 1-0 (DE) +86 29 8956 0050 (CN) | Email: sales@focuslight.com | Website: <https://www.focuslight.com>